

UP

— STAIRLIFT —

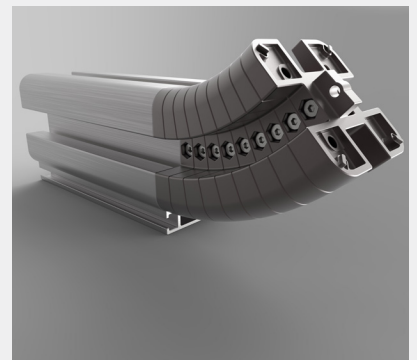


**QUICKEST CURVED STAIRLIFT ORDER-TO-INSTALL TIME:
SAME DAY / NEXT DAY**

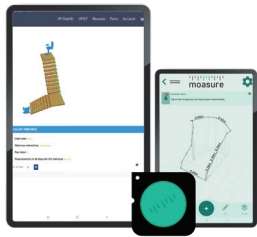
Prepare to take a step into the future with the UP Stairlift! This innovative lift is designed to meet your needs to help you safely enjoy your independence at home. Created with ease of use in mind, the UP Stairlift includes standard features such as the power swivel and power footrest, onboard voice communications, wi-fi connectivity for remote service, and more.

We recognize that everyone's home is unique – the UP Stairlift's modular rail can be configured to fit your staircase on the spot! This way, you can bypass the extra time it takes for custom engineering designs, manufacture backlog, and all the work and waiting in between. Need to extend the rail to another room or down a hallway? The modular rail can accommodate virtually any addition. Want to move to another home but worry you may need to leave your lift? Take it with you and ask for a reconfiguration fit for your new residence.

Let the UP Stairlift uplift your spirit and increase independence at home!



CHANGE YOUR WAY UP



Step One:

While we measure your staircase, our app designs custom rails on the spot.



Step Two:

Experience convenience and comfort right at your doorstep, as our team cuts, configures and installs the perfect solution for your residence.



Step Three:

Our experts will program your UP Stairlift, and provide a comprehensive demonstration to ensure safe use.



“The UP Stairlift is so simple to use! My favorite is the automatic footrest. The support I get from my dealer is exceptional – especially because they can check on my lift remotely. Easy!”

UP STAIRLIFT SERIES PRODUCT SPECIFICATIONS

WEIGHT CAPACITY	- 275 lb (125 kg)
TRACK LENGTH	- up to 62' (19m)
INCLINE LIMITS	- 15° to 70° - 70° drop nose / reduced lower intrusion
FOLDED WIDTH	- 15.5" (394mm)
SPEED	- up to 29.5 FPM (0.15 m/s)
DRIVE	- Rack and pinion
OPTION	- Automatic powered hinge rail
COMPLIANCE	- CSA B355-19 - CSA B44.1/ASME A17.5-2019 - ASME A18.1-2020 - Rated residential - Indoor use only

FEATURES

- 60° power swivel seat at top and bottom landings
- Automatic folding footrest
- Retractable seat belt and sensor
- Constant pressure controls
- 2 Joystick remote controls
- Android App remote
- Overspeed governor brake
- Chassis and footrest obstruction sensors
- Remote Wi-Fi diagnostic

WARRANTY

- 2-year parts & components
- 5-year drive/traction motor
- 6-months battery



Harmar.com
800.833.0478

JUNE92023 | MKT-000207A

