

PINNACLE SL600HD

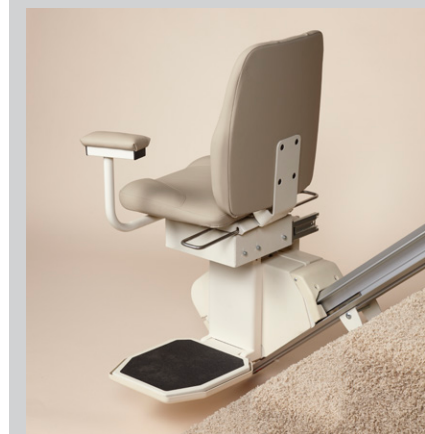
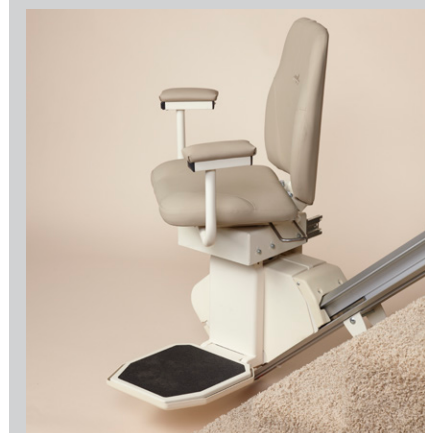
Heavy Duty Stair Lift



INDUSTRY-LEADING 600 LB CAPACITY Commercially Rated Stair Lift

High-backed, contoured 24" (61 cm) wide seat ensures a comfortable and secure ride. Sturdy, stationary armrests and reinforced footrest add stability for safer transfers. Slides out from wall as it pivots at top landing.

As with all Pinnacle stair lifts, the HD model is engineered to the highest industry standards and designed for optimal comfort, convenience and aesthetics.



SWIVEL

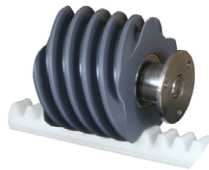
High capacity seat pivots 85° as it slides out to allow for installation closer to the wall and easier dismount.

PREMIUM PERFORMANCE **YOU** DESERVE

Pinnacle SL600HD Stair Lift



Safety sensors on carriage and footrest stop the lift instantly at obstacles.



Nylon-polymer gear with helical worm drive features 6 points of contact for ultimate stability



I can safely access my upper level of my home with my stair lift. It allows me to move comfortably in and out of my chair with its swivel seat and sturdy armrests.

40+

Cycles During Power Loss

600

Pound Capacity

LOW

Maintenance

17"

Folding Width from Wall

SL600HD PRODUCT SPECIFICATIONS

Capacity	600 lb (272.2 kg)
Incline	32° to 45°
Speed	14 fpm
Folded Width	17" (43.2 cm)
Track Length	15' 6" (4.75 m) to 40' (12.2 m)
Seat Size	24" x 16" x 17" (61 x 40.6 x 43.2 cm)
Drive System	Patented Nylon Polymer, Helical Worm Gear
Power	24V DC (Battery), Charger Plugs in Standard AC Outlet
Safety Feature(s)	Obstruction Sensors, 85° Seat Swivel Interlock, Seatbelt, Centrifugal Overspeed Brake
Warranty	3-Year Parts, 10-Year Gear, 1-Year Battery
Option(s)	Retractable Seat Belt, Key Lock, Extra Rail



Harmar.com | 800.833.0478

